

# PIPE MARKING GUIDE

to the ANSI/ASME A13.1 – 2007 Standard for the Identification of Pipes

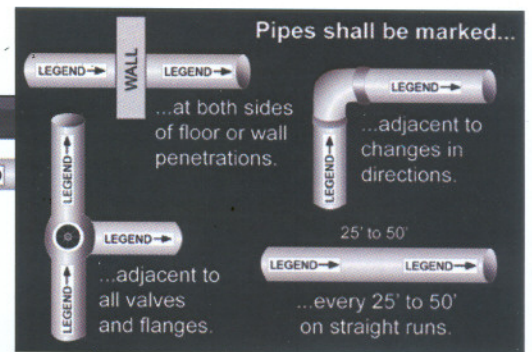
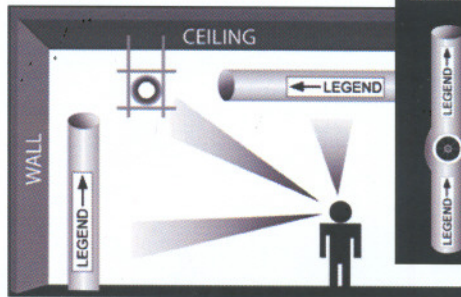
## COLOR CODE

Material Properties	Letter color on Field color	Example
<b>FLAMMABLE</b> Fluids which are a vapor or produce vapors that can ignite and continue to burn in air	Black on Yellow	→ <b>HYDROGEN</b> →
<b>COMBUSTIBLE</b> Fluids that may burn but are not flammable	White on Brown	→ <b>ACETIC ACID</b> →
<b>TOXIC &amp; CORROSIVE</b> Fluids which are corrosive or toxic or will produce corrosive or toxic substances	Black on Orange	→ <b>NITRIC ACID</b> →
<b>FIRE QUENCHING</b> Water and other substances used in sprinkler fire-fighting piping systems	White on Red	→ <b>HALON</b> →
<b>OTHER WATER</b> Any other water, except for water used in sprinkler and fire-fighting piping systems	White on Green	→ <b>BOILER WATER</b> →
<b>COMPRESSED AIR</b> Any vapor or gas under pressure that does not fit a category above	White on Blue	→ <b>COMPRESSED AIR</b> →
<b>DEFINED BY USER</b>	White on Black	→ <b>DEFINED BY USER</b> →
<b>DEFINED BY USER</b>	Black on White	→ <b>DEFINED BY USER</b> →
<b>DEFINED BY USER</b>	White on Purple	→ <b>DEFINED BY USER</b> →
<b>DEFINED BY USER</b>	White on Gray	→ <b>DEFINED BY USER</b> →

## PLACE MARKERS:

- To indicate direction of flow by labeling with arrows at one or both ends of the label
- To be visible from the point of normal approach
- Near valves, flanges and changes in pipe direction
- Both sides of ceiling, wall or floor penetrations
- At any line entry or re-entry point
- On straight pipe runs
- Every 50 feet

Right: Orientation of Labels



Above: Label placement in relation to point of normal approach

## PIPE MARKER SIZE CHART Letter and Label Dimensions in accordance with pipe diameter

Outside Pipe Diameter Including Covering	Minimum Length of Label Field Color	Minimum Height of Letters
.75" - 1.25"	8" 203 mm	.5" 13 mm
1.5" - 2"	8" 203 mm	.75" 19 mm
2.5" - 6"	12" 305 mm	1.25" 32 mm
8" - 10"	24" 610 mm	2.5" 64 mm
Over 10"	32" 813 mm	3.5" 89 mm

**NOTE:** It is recommended that pipes less than .75" in diameter be labeled with a permanent tag.